

UNCHAINED ENERGY

MOBILIS
MOVTT



ELECTRIFICATION OF TRAVELLING MACHINES



As a leading specialist in electrical power supply, FELS is broadening its MOBILIS range with a highly innovative line of single-conductor rails boasting an unrivalled aesthetic quality.

FROM INTEGRATION TO MAINTENANCE - A WHOLE LINE OF INNOVATIONS

MOBILIS MOVIT benefits from over 30 years' experience in electrical power rails and has in-depth knowledge of expectations on the world market - for all integrators, fitters and users. Designed in the same spirit as the multi-pole conductor rail MOBILIS ELITE, MOBILIS MOVIT focuses on three key features :

- simplicity, in terms of transport, assembly, maintenance and dismantling ;
- safety, by taking into account installation and service conditions as well as respecting standards and regulations ;
- reliability, for optimum customer satisfaction.



INSTALLATION AND ASSEMBLY - HIGHLIGHTS

As with the entire MOBILIS range, everything has been designed to facilitate the mounting process :

- suspensions pre-assembled in multiple pole units ;
- the profile easily slots into the suspensions by a simple clipping process ;
- many parts, such as covering flanges, feed boxes etc. are mounted without tools, screws or nuts ;
- all accessories are factory mounted.

MOBILIS MOVIT® : ELECTRIFICATION LINE WITH SINGLE POLE CONDUCTOR RAILS 315A - 450A - 630A

HIGHER PERFORMANCE

Designed in aluminium with a stainless steel track for the contact surfaces, it offers you high conductivity, light weight, competitive production costs and flexibility of shape.

With a clearance between rails of 50 mm, the aesthetic, compact design takes up minimum space and minimises voltage drops due to its low line impedance.

HIGHLY PRACTICAL

Numerous features make MOBILIS MOVIT easy to integrate, install and use:

- simply sliding and clipping into the suspensions
- compact connection requiring minimum preparation
- high-speed collector travel (up to 600 m/min.)
- long-distance lines without expansion joints
- suitable for inside or outside installation
- no tools required to mount insulation accessories
- rail profile providing easy installation of a de-icing system etc.

GREATER SAFETY

Security and working safety are the key-words for the entire range in total respect of the regulations and standards in force. The installed rail offers a protection index of IP 23, the PVC insulating envelope is fluted, thereby increasing insulation clearance, the collector brush has innovative reinforced insulation, the shape of the contact track enhances the quality and reliability of current collection, the quality of the materials and the care taken at every stage guarantee a long life.



DESIGN: ENHANCED EFFICIENCY

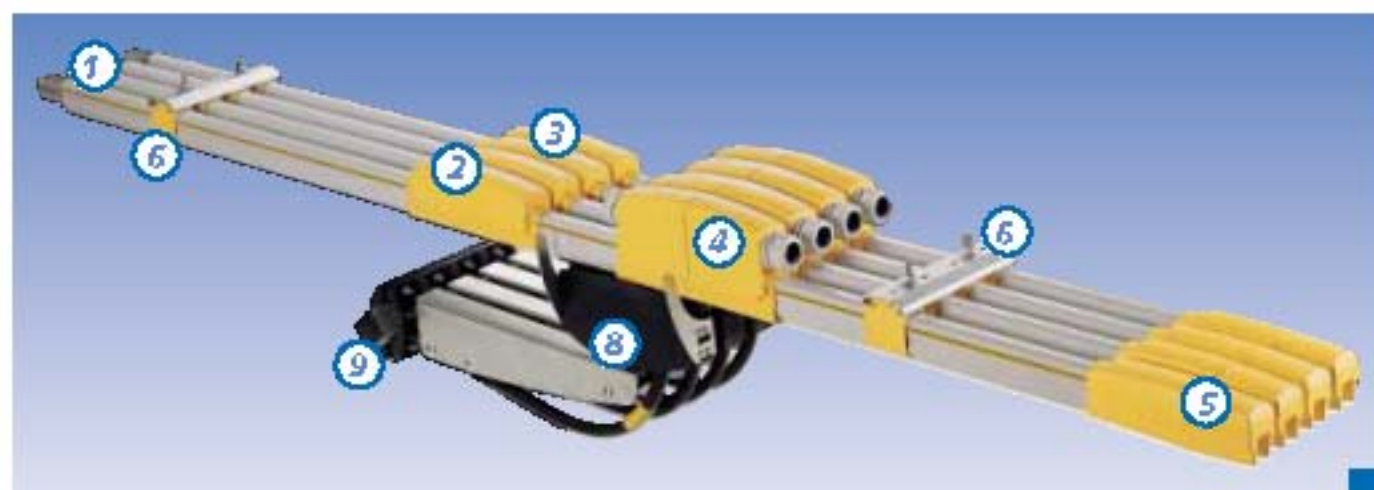
Just like the entire MOBILIS range, this rail has benefited from all the power of industrial design by combining performance, ergonomics, aesthetics and economic reality.

A VAST ARRAY OF APPLICATIONS

With this particularly powerful single-conductor rail, whole new fields of demanding applications can now benefit from the innovations and top performance of the MOBILIS range:

- *handling of heavy loads ;*
- *port industries ;*
- *high-capacity overhead cranes ;*
- *gantries ;*
- *human transport (peoplemover, monorails in amusement parks etc.)*





GENERAL FEATURES

Conformance to standards CEI60439-2 and EN60204-32 - Protection index IP23 according to CEI60529. Maximum operating voltage: 750 VAC - Minimum and maximum ambient temperatures: -30°C to +55°C. Resistance to short circuits: please consult us beyond I_{cw} 8.5 kA 0.2s and I_{pk} 17kA. All plastic accessories are self-extinguishing.

1 RAILS

Aluminium conductor with stainless steel track.
Self-extinguishing insulation in rigid PVC.
Duty cycle at 35°C: 100% for 315 and 450A, 75% for 630A.

Intensity	Weight per metre per rail	Impedance in 3-phase 50 Hz 35°C	Impedance in					Special length
			4 metres	3 metres	2 metres	1 metre		
315 A - phase	0.81 kg	$2.27 \times 10^{-1} \text{ Ohm/m}$	HC134	HC133	HC132	HC131	HC130	
315 A - earth			HC134	HC133	HC132	HC131	HC130	
450 A - phase	1.03 kg	$1.72 \times 10^{-1} \text{ Ohm/m}$	HC144	HC143	HC142	HC141	HC140	
450 A - earth			HC144	HC143	HC142	HC141	HC140	
630 A - phase	1.26 kg	$1.49 \times 10^{-1} \text{ Ohm/m}$	HC164	HC163	HC162	HC161	HC160	
630 A - earth			HC164	HC163	HC162	HC161	HC160	



2 CONNEXION

Reference: MC1000
For the feed box and each junction between the rails, standard for all intensities.
Weight: 0.3 kg



3 FLANGE

Reference: MC2200
Insulates the connections, no-tools assembly.
Thermoplastic.
Weight: 0.17 kg.
Length: 250 mm.



4 FEED BOX

Reference: MC2300
For line link-up to a connection, with terminal lugs $\varnothing 10$, 2 cable glands.
M32 (cable \varnothing 15 to 25 mm).
Thermoplastic.
Weight: 0.36 kg,
length: 290 mm.



5 TRANSFER ELEMENT-END CAP

Reference: MC2400
To insulate the ends and create transfer points, no-tools assembly.
Thermoplastic.
Weight: 0.14 kg,
length: 190 mm.



6 SLIDING SUSPENSION

Supports rails and allows for rail expansion.

Clearance 50 mm, self-aligning.
To be installed every 2 metres.
Thermoplastic and anodised aluminium.



number of poles	weight	reference
1	0.3 kg	MC204
5	0.28 kg	MC205

8 COLLECTOR

Collector current capacity:
single = 200A,
double = 400A.
Duty cycle: 50% at 35°C.
Maximum travel speed:
600 m/min.
Lateral clearance +/-100 mm,
vertical clearance +/-50 mm.
Delivered with 50 mm² flexible cable,
length 2 metres.



Type	Phase	Term	Poles
Single	W0402	W0422	3/5 kg
Double	W0402	W0422	7/50 kg

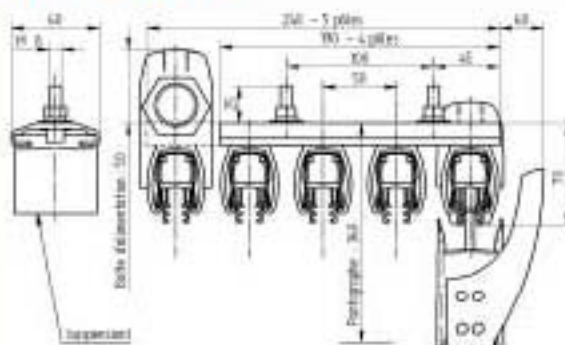
11 EXPANSION JOINT

Compensates expansion on lines over 200 metres in length. Assembled like the rail elements, nominal length 4 m to be adapted according to the assembly temperature.



intensity	weight	reference
35 A - phase	6.2 kg	W0534
35 A - earth		W0534
40 A - phase	7.0 kg	W0544
40 A - earth		W0544
6.0 A - phase	7.9 kg	W0564
6.0 A - earth		W0564

13 DIMENSIONS



7 FIXING CLAMP

Reference : **MC2600**

2 clamps placed on either side of a sliding suspension to immobilise a pole.
Anodised aluminium.
Weight: 0.07 kg,
length 40 mm.



9 COLLECTOR BRACKET

Reference : **MC4900**

For single and double collectors up to 5 poles.
Galvanised steel.
Weight: 2 kg,
length: 500 mm.



10

Reference : **MC2550**

To mount sliding suspensions on the support structure.
Clamping capacity:
thickness 15 to 30 mm,
width 300 mm.
Galvanised steel.
Weight: 1.1 kg.



12 MISCELLANEOUS

- Supply connection lugs
50 mm² terminal 10 reference MC8050
70 mm² terminal 10 reference MC8070
95 mm² terminal 10 reference MC8095
- Contact grease for 200 connections reference MC1010
- Brush to prepare the rail ends reference MC8010
- Suspension undipping kit reference MC8025
- Replacement brush for collector reference MC8040
- Single cleaning collector reference MC4190

MOBILIS ELITE : ELECTRIFICATION LINE WITH MULTI-POLE CONDUCTOR RAILS 20A TO 200A

MOBILIS ELITE * : ENERGY IN MOTION

MOBILIS ELITE is the range that has been the industrial reference for many years now. It is designed in cooperation with the Plastics Technology Centre for eastern France and the Engineering Institute for the Application of High Polymers and totally meets the needs of most integrators, installers and users of lifting equipment ranging from 20 A to 200 A. With its myriad innovations and aesthetic touch, it has inaugurated the permanent features of the MOBILIS range offering solutions that meet professional requirements in terms of performance, safety, flexibility and cost-effectiveness.

ACCESSORIES

A broad range of accessories are available:

- clip-on suspensions for rapid mounting-dismantling
- no-tools feed box and covering flange
- factory-mounted protection lips (option)
- various models of trolleys according to the application etc.

FELS:



MOBILIS MOVIT - MOBILIS ELITE: The dream team

TITAN[®]

TITAN CRANE CO., LTD.

1/19 หมู่ 1 ต.พิมพา อ.บางปะกง จ.ฉะเชิงเทรา 24180

โทร. +66 (038) 571 666-9 แฟกซ์ : +66 (038) 571 665

1/19 MOO 1 PIMPA, BANGPAKONG, CHACHOENGSAO 24180

Tel. +66 (038) 571 666-9 Fax : +66 (038) 571 665

www.titancrane.co.th E-mail : titanemail@yahoo.com